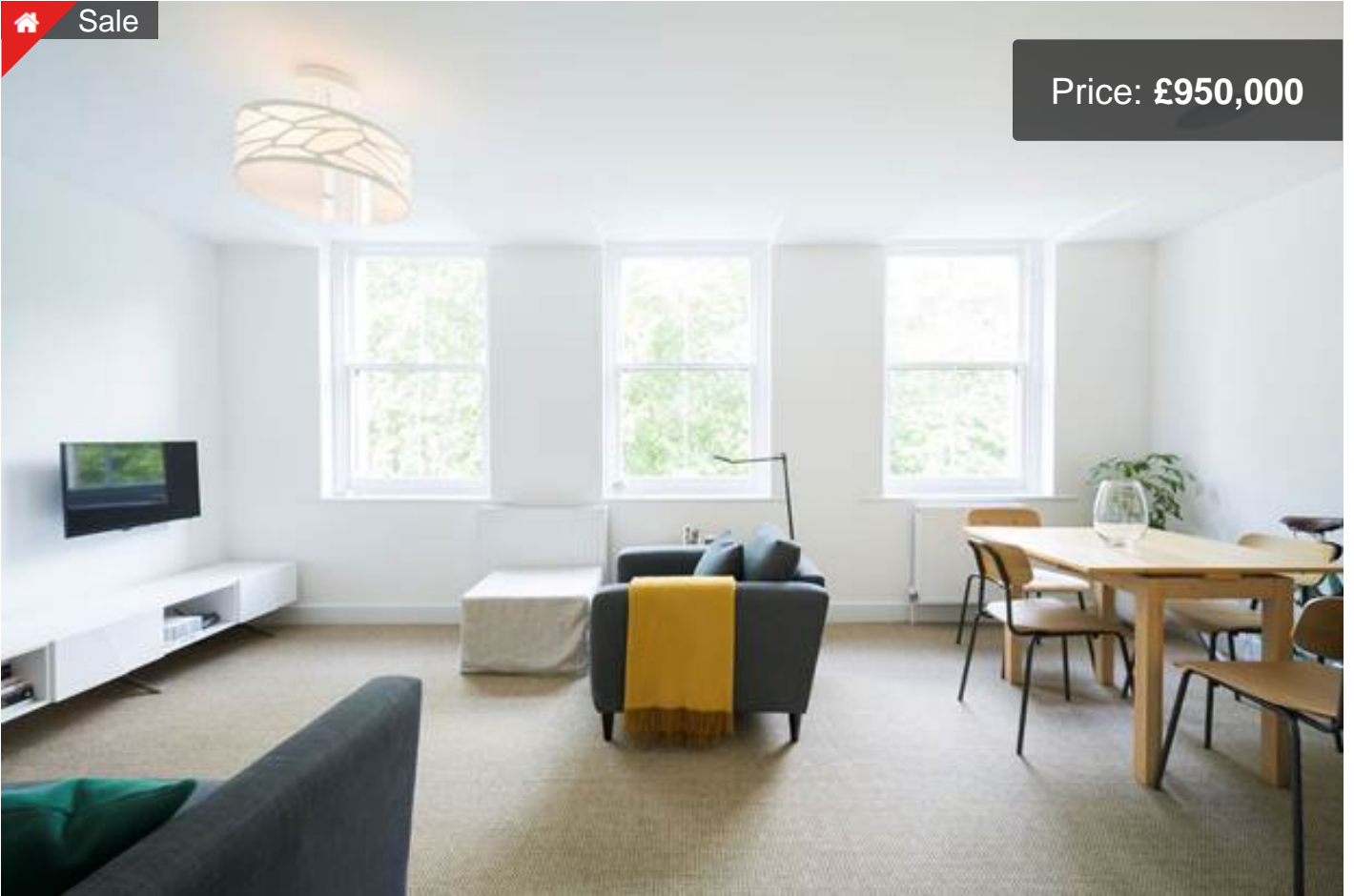


 Sale

Price: **£950,000**



Kensington Gardens Square, Bayswater, Londra, W2

Property Overview

ID	KensingtonGardensSquare	Type	Flat
Sold	No	Contract	Sale
Location	London	Rooms	1
Beds	2	Baths	1

Description

Real Estate Xchange is proud to offer an attractive period building, a superb two-bedroom apartment which overlooks and has access to a residents' garden square.

Kensington Gardens Square is located perfectly for the amenities of Westbourne Grove and is within easy reach to Notting Hill and Hyde Park. Queensway [Central line] and Bayswater [District and Circle lines] are the closest Underground stations.

Amenities

Public Park



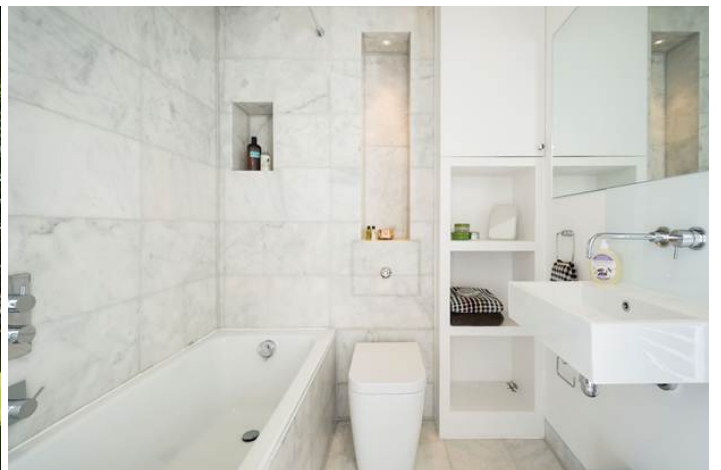
Public Transports



Schools

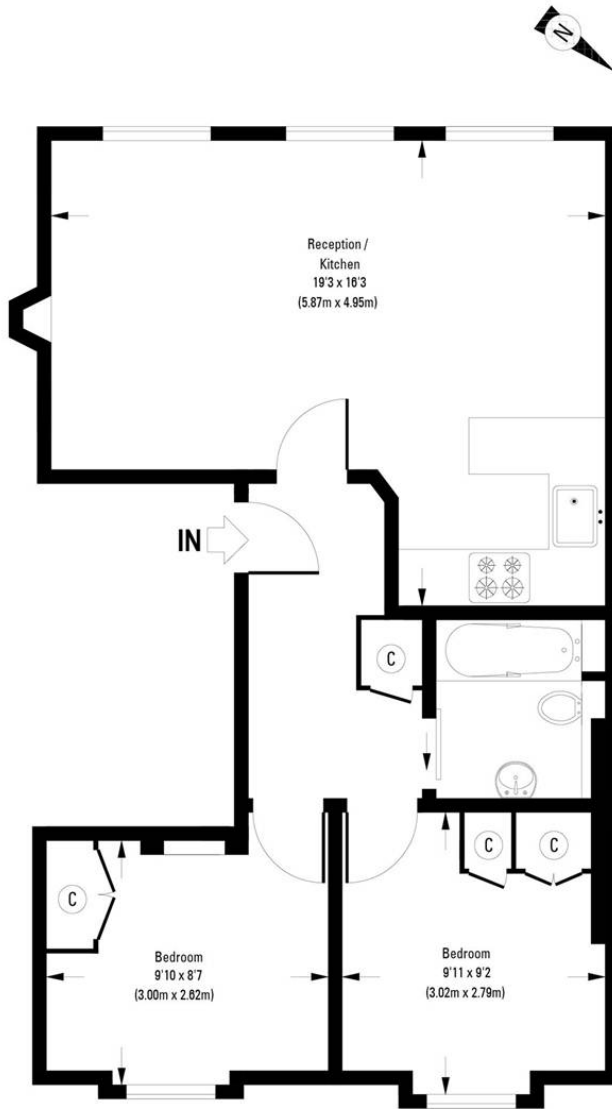


Shops





Floor Plans



Third Floor

Approximate Gross Internal Area (Inc. Restricted Height Area)

553 Sq.Ft. / 51.4 Sq.M.

Floor Plans are illustrative purposes only and not to scale.
Compliant with RICS code of measuring practice.

————— **Real Estate Xchange** will help you to find the best deal —————

London Office

28 Charing Cross Rd,
WC2H 0DB,
UK, London WC2H 0DB

+44 (0) 2076032677

info@realestatexchange.co.uk

Milan Office

Via Gesu n10,
20121 Milano,
Italy

+39 02 4032 6414

info@realestatexchange.co.uk